



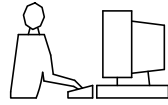
**HESTORE.HU**

elektronikai alkatrész áruház

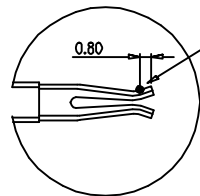
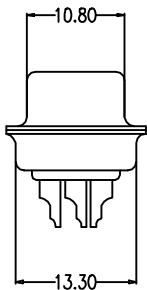
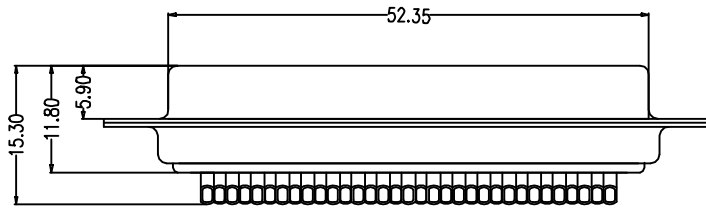
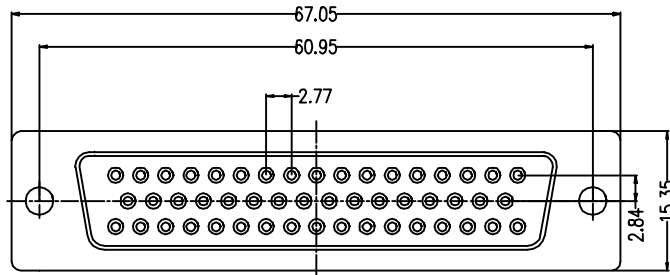
**EN:** This Datasheet is presented by the manufacturer.

Please visit our website for pricing and availability at [www.hestore.hu](http://www.hestore.hu).

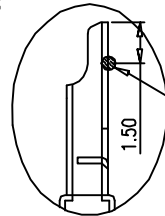
THIS IS A C.A.D. GENERATED DRAWING  
DO NOT MAKE MANUAL REVISIONS TO MASTER.



\* UNLESS OTHERWISE SPECIFIED TOLERANCES  
ON DECIMAL IS: ANGLE X.' ± 3' X.X' ± 1'  
UNIT: MM X. ± 0.30  
X.X ± 0.25  
X.XX ± 0.20  
X.XXX ± 0.15



GOLD PLATING  
TEST POINT



Tin PLATING  
TEST POINT

REMARK:

1.CHARACTERISTICS:

- 1.1. RATED VOLTAGE: 250V
- 1.2. RATED CURRENT: 3 AMP
- 1.3. CONTACT RESISTANCE: 25mohms MAX. INITIAL;40mohms MAX.AFTER
- 1.4. INSULATION RESISTANCE: 5000Mohms MIN.at 500V DC
- 1.5. DIELECTRIC STRENGTH: 1000VRMS
- 1.6. OPERATING TEMPERATURE RANGE: -55°C~85°C
- 1.7. INSERTION/EXTRACTION FORCE PER CONTACT: 1200g Max./20g Min

2.MATERIAL:

- 2.1. INSULATORS: PBT+30% G.F(UL94V-0) BLACK
- 2.2. CONTACTS: BRASS,1u" GOLD PLATING ON CONTACTAREA, 80~100u"Min BRIGHT TIN TOP OVER SOLDER AREA, 50u"Min NICKEL UNDER PLATE
- 2.3. FRONT SHELL: SPCC,80u" Min NICKEL TOP OVER,50u" Min COPPER UNDER PLATE
- 2.4. BACK SHELL: SPCC,80u" Min BRIGHT TIN TOP OVER, 50u" Min COPPER UNDER PLATE

THESE DRAWINGS AND SPECIFICATIONS ARE THE PROPERTY OF MH CONNECTORS AND SHALL NOT BE REPRODUCED, COPIED OR USED AS THE BASIS FOR THE MANUFACTURE OR SALE OF APPARATUS WITHOUT WRITTEN PERMISSION.

DRAWN Johnny Chen	DATE 04-25-19
----------------------	------------------

APPROVED Victor Lin	DATE 04-25-19
------------------------	------------------

SCALE	SHEET OF 1 OF 1	REV: 1.0
-------	--------------------	-------------

DRAWING No MHDB50-SS
-------------------------



THIS SERIES FULLY CONFORMS TO THE EUROPEAN UNION DIRECTIVES 2002/95/EC AND 2002/96/EC FOR RoHS COMPLIANCY.



MH CONNECTORS,  
DIVISION OF EDAC