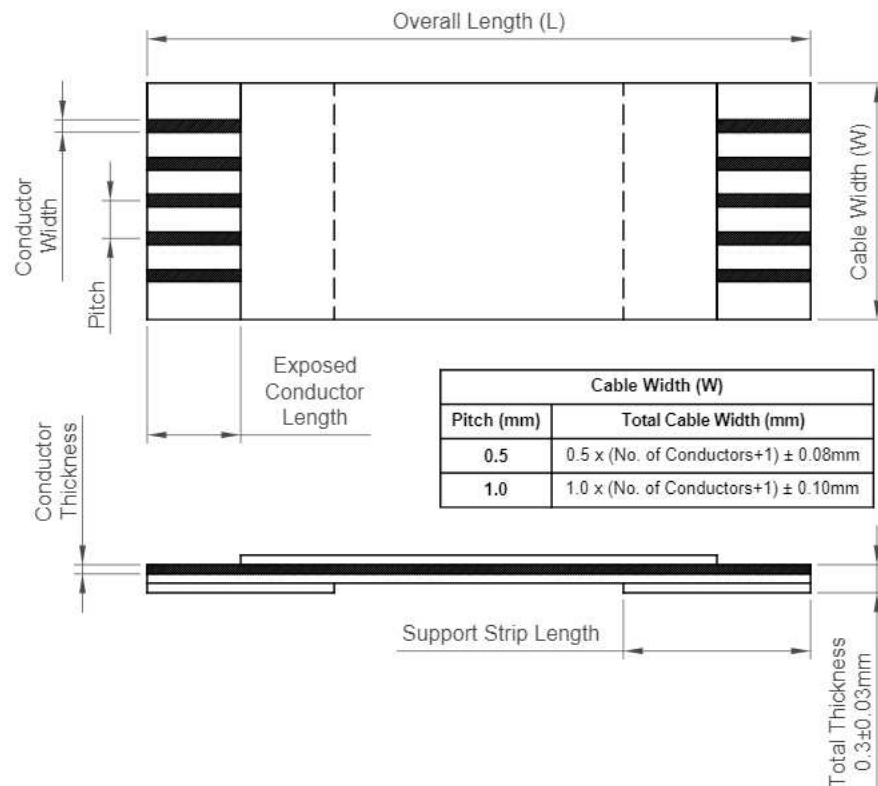




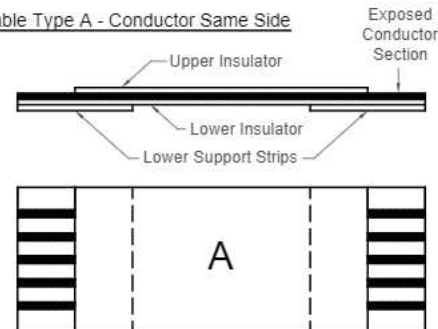
EN: This Datasheet is presented by the manufacturer.

Please visit our website for pricing and availability at www.hestore.hu.

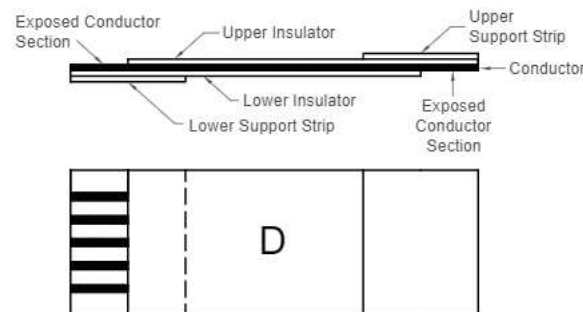
H
G
F
E
D
C
B
A



Cable Type A - Conductor Same Side



Cable Type D - Conductor Opposite Side



Specifications

Materials

Conductor: Tinned Copper
Insulation: Flame retardant polyester, White
Supporting Tape: Polyester, Blue

Electrical

Voltage Rating: 60V
Current Rating: 0.5mm pitch=0.5A
1.0mm pitch=1A

Mechanical & Environmental

Operating Temperature: 80°C (UL20624)
105°C (UL20706)

Durability: 30 Cycles

Notes

For tolerance information, contact GCT

For non-standard options, contact GCT

- Exposed conductor length
- Support strip length
- Conductor thickness/width
- Folding/bending to an angle

Ordering Grid

XX - XX - X - XXXX - X - X - XX - X - X Request Samples and Quotation

Pitch
05 = 0.5mm
10 = 1.0mm

Number of Conductors
04-80 (0.5mm pitch)
04-50 (1.0mm pitch)

Cable Type
A = Conductor Same Side
D = Conductor Opposite Side

Overall Length (L)
Specify cable length (Minimum = 30mm)
eg 0030 = 30mm
0100 = 100mm

Conductor Thickness x Width
A = 0.035 x 0.3 (0.5mm pitch only)
D = 0.035 x 0.65 (1.0mm pitch only)
E = 0.05 x 0.65 (1.0mm pitch only)
C = 0.1 x 0.65 (1.0mm pitch only) (Tin plating only)

Plating
T = Tin (Standard)
G = Gold (Conductor Thickness x Widths A, D & E only)
(MOQ 5,000 pcs)

UL Style No.
1 = UL20624, not printed (standard)
2 = UL20624, printed
3 = UL20706, not printed
4 = UL20706, printed

Support Strip Length
06 = 6mm both ends (standard - 0.5mm pitch)
08 = 8mm both ends (standard - 1.0mm pitch)

Exposed Conductor Length
4 = 4mm both ends (standard)

Support Strip and Plating Options by Pitch

Pitch (mm)	Support Strip Length (mm)	Plating Options (conductor thickness x width (mm))	
		Tin	Gold
0.5	6	0.035 x 0.3 (A)	0.035 x 0.3 (A)
		0.035 x 0.65 (D)	0.035 x 0.65 (D)
1.0	8	0.05 x 0.65 (E)	0.05 x 0.65 (E)
		0.1 x 0.65 (C)	0.1 x 0.65 (C)

See Shielded FFC drawing for shielding options

Part Number		Product Description		
N/A		Flat Flex Cable Ordering Information		
Drawing Date				
23rd May 2011				
By	CC	Tolerances (Except as Noted)	Units:	
		Length	Angle	
Detail	FFC CABLE B PCN		Metric (mm)	
Revision	B1			
Date	30/06/23			
				
This drawing is confidential and copyright of Global Connector Technology, Ltd (GCT). This drawing must not be copied or disclosed without written consent. E & OE				
Not to Scale		Drawn By SA		Sheet No. 1/1