



EN: This Datasheet is presented by the manufacturer.

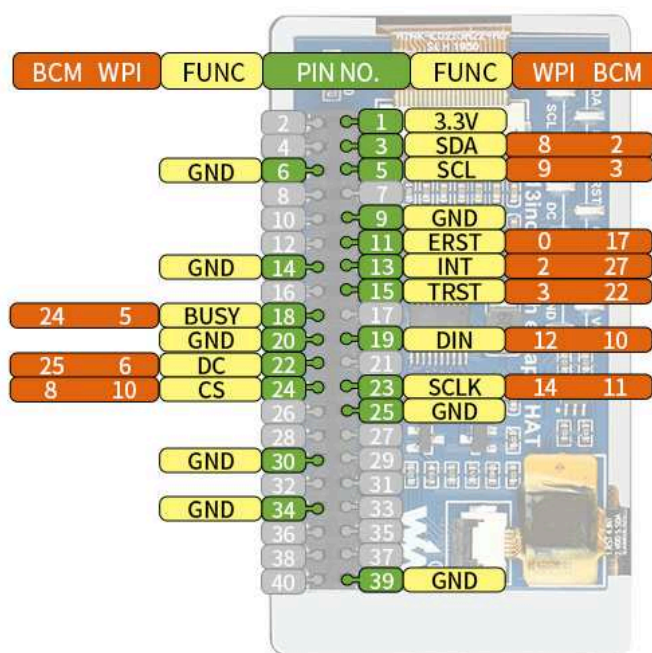
Please visit our website for pricing and availability at www.hestore.hu.

2.13" Touch e-Paper with case



Raspberry Pi in the photo is NOT included.

Pinout Definition



3.3V	3.3V power supply
GND	Ground
SDA	Touch controller I2C data pin
SCL	Touch controller I2C clock pin
ERST	External reset (low active)
INT	Touch controller interrupt
TRST	Touch controller reset (low active)
DIN	SPI MOSI pin
SCLK	SPI SCLK pin
BUSY	Busy status output (high active)
DC	Data/Command control (high for data, low for command)
CS	SPI chip select (low active)

Specifications

OPERATING VOLTAGE	3.3V	GREY SCALE	2
INTERFACE	3-wire SPI, 4-wire SPI	PARTIAL REFRESH TIME	0.3s
OUTLINE DIMENSIONS	69.15 x38.90mm	FULL REFRESH TIME	2s
DISPLAY SIZE	48.55 x23.70mm	REFRESH POWER	26.4mW(typ.)
DOT PITCH	0.194 x0.194mm	STANDBY CURRENT	<0.01uA (almost none)
RESOLUTION	250×122 pixels	VIEWING ANGLE	>170°
DISPLAY COLOR	black, white	TOUCH POINT	5 (max)

Outline Dimensions



How To Install

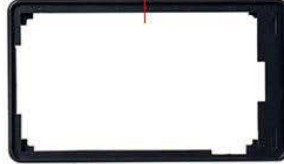
Raspberry Pi in the photo is NOT included.

1. remove the back coating from the display, and attach the display to the upper case

back coating



upper case

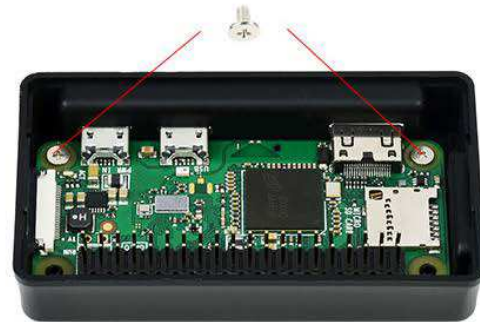
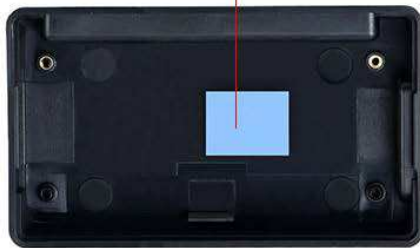


after attaching

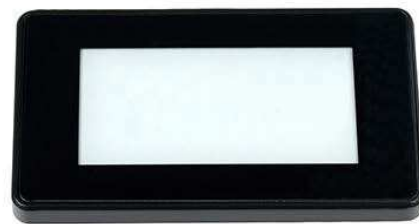


2. attach the thermal tape on heat dissipation holes of lower case, fix the Zero with screws

thermal tape



3. combine the upper and lower cases (by aligning the pinheaders), attach the rubber feet.



rubber feet

