



HESTORE.HU

elektronikai alkatrész áruház

EN: This Datasheet is presented by the manufacturer.

Please visit our website for pricing and availability at www.hestore.hu.

15

1503 31

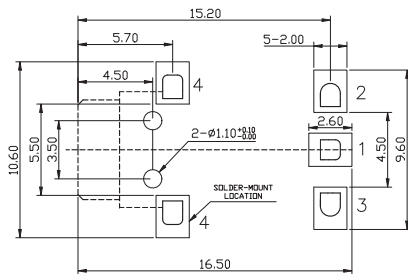
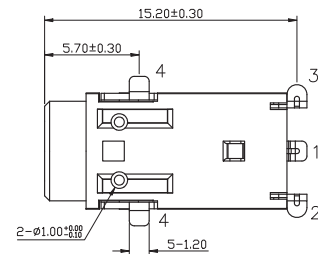
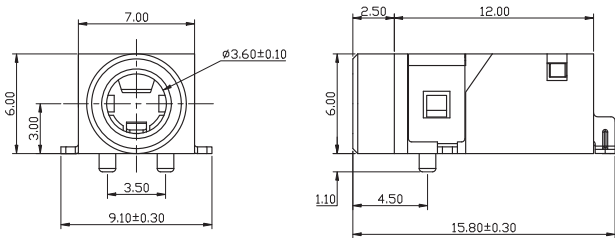
Jack connectors



Jack chassis socket according to JEITA RC-5325A JC35J4A,
3.5 mm, 4 poles/stereo, angular version, for printed circuit
boards, surface mount technology (SMT)

15

1503 31



Environmental conditions

Temperature range -25 °C/+70 °C

Materials

Insulating body PPA, V-0 according to UL94
Contact spring CuZn/CuSn, silver-plated

Mechanical data

Mating cycles 5000
Insertion force 3-30 N
Withdrawal force 3-30 N

Electrical data (at T_{amb} 20 °C)

Contact resistance ≤ 30 mΩ
Rated current 1 A
Rated voltage 30 V
Rated impulse voltage 500 V/60 s
Insulation resistance ≥ 100 MΩ

Associated products

Counterparts
☑ 1532 02

*a printed circuit board layout, components side view

15

1503 31

Designation	Pole Number	PU (Pieces)	MDQ (Pieces)
1503 31 VP3	4	550	1100

Packaging:

on reel