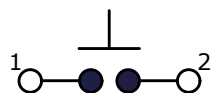
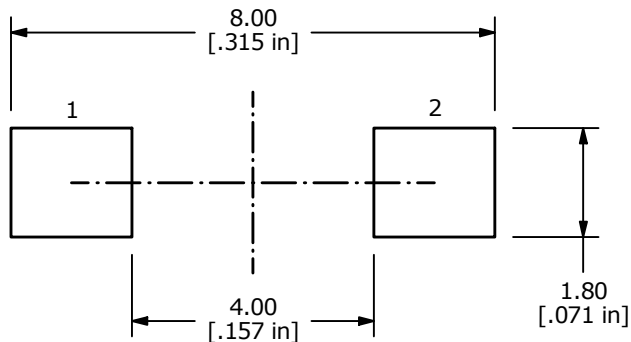




EN: This Datasheet is presented by the manufacturer.

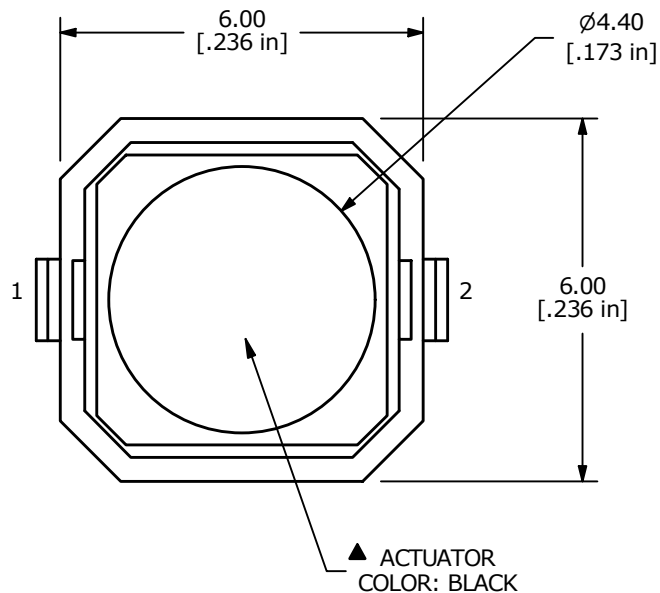
Please visit our website for pricing and availability at www.hestore.hu.



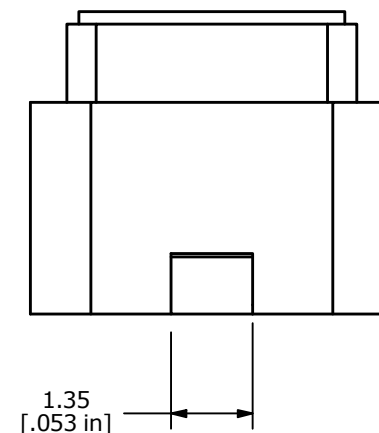
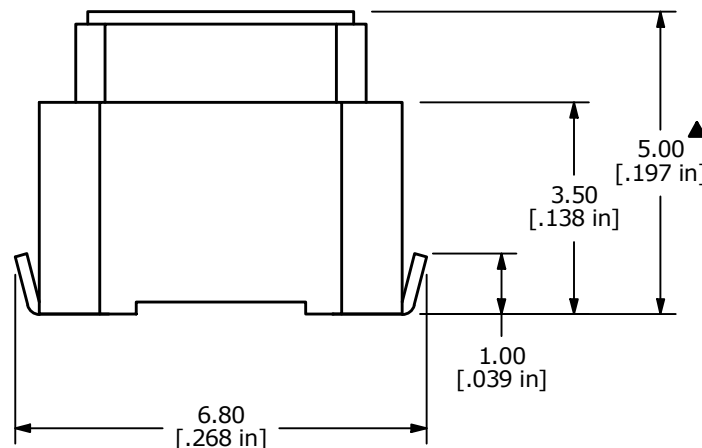
▲ CIRCUIT: SPST

NOTES:

1. ALL DIMENSIONS IN MM [INCH]
2. TERMINAL NUMBERS FOR REF. ONLY
3. TOLERANCE: X.X = ± 0.4
X.XX = ± 0.25
4. RATING: 50mA @ 12VDC
5. TRAVEL: 1.3 ± 0.2
- ▲ 6. OPERATING FORCE: $180 \pm 50\text{gF}$
7. ELECTRICAL LIFE: 100,000 CYCLES MIN.
8. CONTACT RESISTANCE: $100\text{m}\Omega$ MAX.
9. CONTACT MATERIAL: SILVER
10. INSULATION RESISTANCE: $>100\text{M OHMS}$ AT 100 VDC
11. DIELECTRIC STRENGTH: 250VAC FOR ONE MINUTE
12. OPERATING TEMPERATURE: -20C to $+80\text{C}$
- ▲ 13. PACKAGING: TAPE AND REEL, 2000 PIECES PER REEL
14. ▲ DENOTES CRITICAL PARAMETER



SCALE: 4:1



REV	ECO NO	DESCRIPTION	DATE	BY	OBJECT ID			
F	ECO-100472	note 13 to 2000 pieces, Actuator to Black	10/21/21	MW	000018046			
					TITLE TL9210AF180Q			
THE INFORMATION CONTAINED IN THIS DOCUMENT IS PROPRIETARY TO E-SWITCH AND IS NOT TO BE COPIED OR TRANSFERRED					SCALE 8:1	DATE 7/21/2014	DR rc	DWG P010920
								REV F