



EN: This Datasheet is presented by the manufacturer.

Please visit our website for pricing and availability at www.hestore.hu.

SJ0224-K/KF
SJ02230-K/KF

General Damper Actuator
2Nm
2-Point and 3-Point

- For operation of air control dampers in HVAC system
- Toque:2Nm
- Nominal voltage: AC/DC24V AC100...240V
- Control:On/Off/2-Point/3-Point
- -KF type include 1 group of auxiliary switch

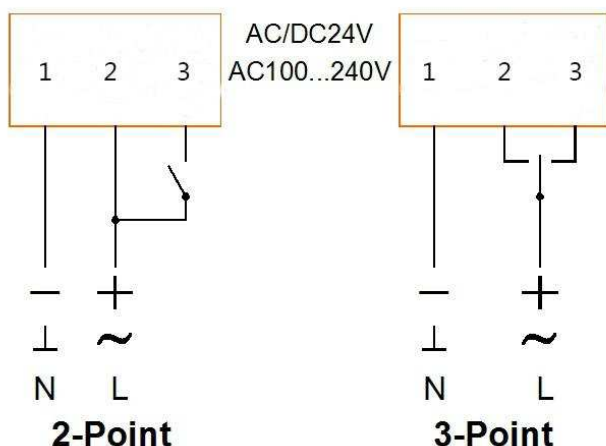


Technical Specification

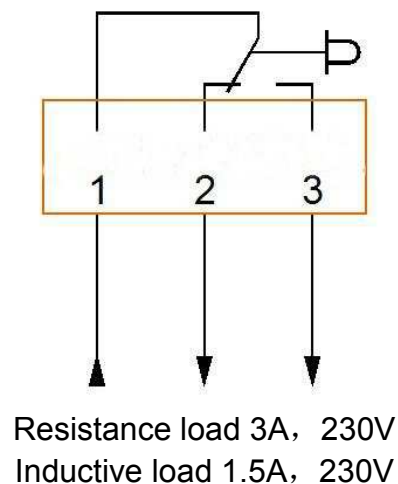
		SJ0224-K/KF	SJ020230-K/KF
Electrical data	Nominal voltage	AC24V 50/60Hz DC24V	AC100...240V 50/60Hz
	Nominal Voltage range	AC/DC 19.2...28.8V	AC85...265V
	Power consumption	4.5W@Nominal toque 0.5W@Holding	4.5W@Nominal torque 0.5W@Holding
	Wire sizing	0.5mm ²	
Functional data	Torque	2Nm	
	Damper size	0.3m ²	
	Direction of rotation	Selectable by switch	
	Manual override	Gearing latch disengaged by push button, self-resetting	
	Angle of rotation	Max.95° ,adjustable by mechanical stops	
	Running time	15-25S (95°)	
	Sound power level	45dB	
	Position indication	Mechanical	
Working conditions	Protection class	III (safety low voltage)	II (totally insulated)
	Protection degree	IP54	
	Ambient temperature	-20...+50℃	
	Inventory temperature	-30...+80℃	
	Humidity test	95%RH, non condensing / EN 60730-1	
Dimensions/ Weight	Dimensions	See "Dimensions"	
	Shaft length	>50mm	
	Shaft diameter	○6...16mm □5X5...12X12 mm	
	Weight	<0.5Kg	

Wiring Diagram

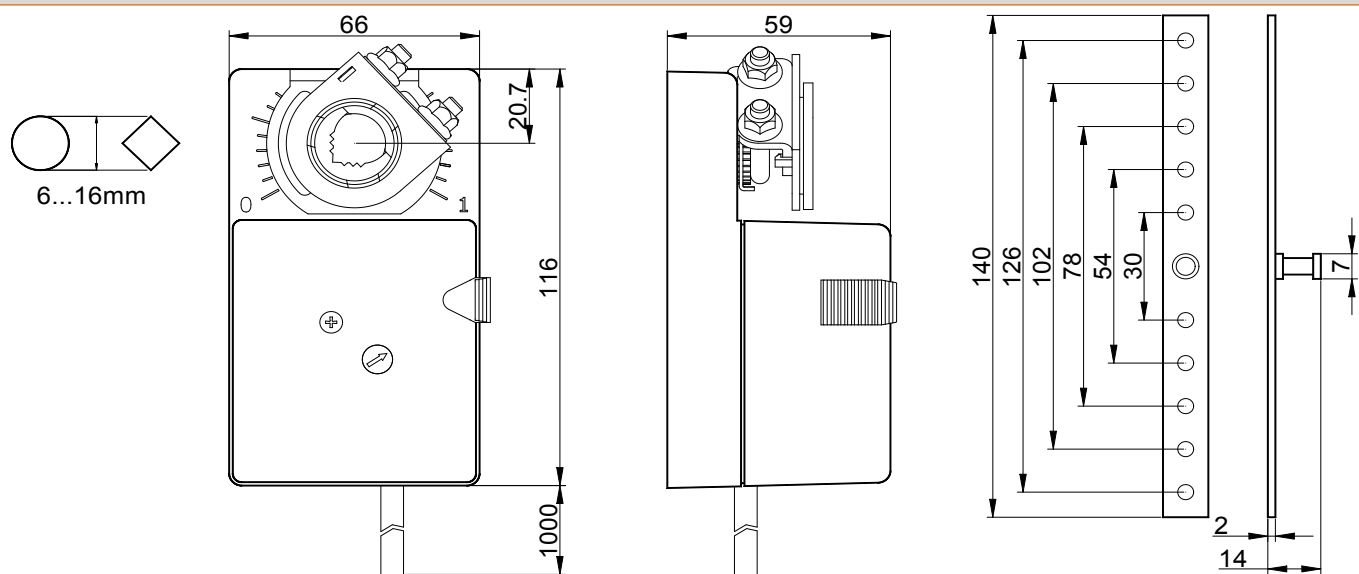
Actuator



Auxiliary switch



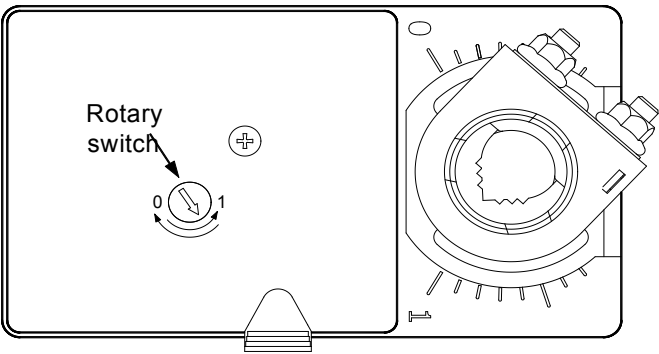
Dimensions(mm)



Switch The Direction Of Rotation

Set switch direction:

- Turn to 0
With the signal increase, actuator rotates anticlockwise.
- Turn to 1
With the signal increases, actuator rotates clockwise.



- KF Models Adjust The Auxiliary Switch

Factory settings:

Switch	Terminal 1, 2	Terminal 1, 3
0-10°	Short circuit	Open circuit
10-90°	Open circuit	Short circuit

*According to customer order requirement set switch angle

Caution

1. The Damper Actuator is not allowed to be used outside the specified field of application, especially in aircraft.
2. The enclosure of the actuator equipment may only be opened by the manufacturer. It contains no components which the user can replace or repair.
3. The device contains electrical and electronic components and is not allowed to be disposed of as household refuse. All locally valid regulations and requirements must be observed.