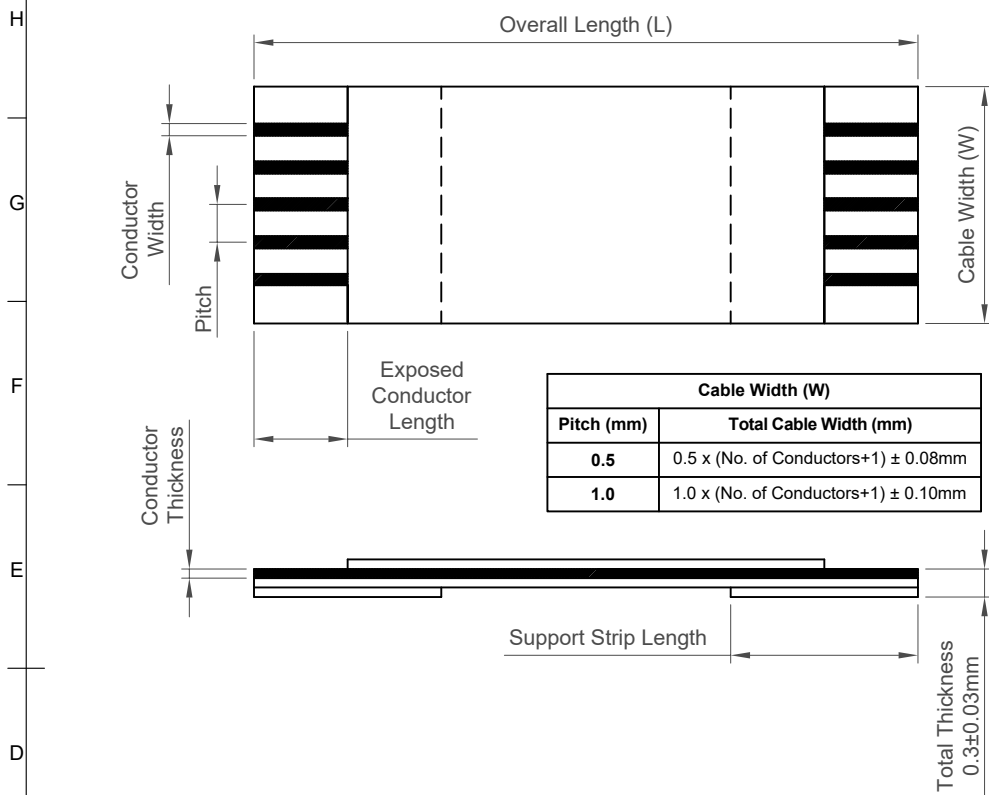




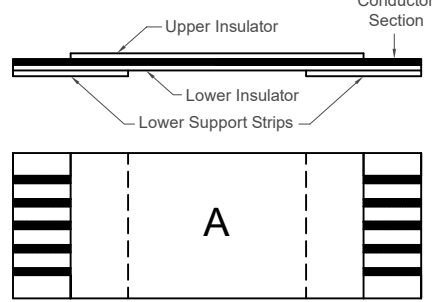
**EN:** This Datasheet is presented by the manufacturer.

Please visit our website for pricing and availability at [www.hestore.hu](http://www.hestore.hu).

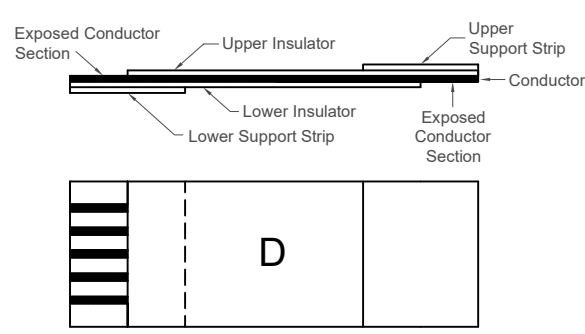


Cable Width (W)	
Pitch (mm)	Total Cable Width (mm)
0.5	0.5 x (No. of Conductors+1) ± 0.08mm
1.0	1.0 x (No. of Conductors+1) ± 0.10mm

Cable Type A - Conductor Same Side



Cable Type D - Conductor Opposite Side



## Specifications

### Materials

Conductor: Tinned Copper  
 Insulation: Flame retardant polyester, White  
 Supporting Tape: Polyester, Blue

### Electrical

Voltage Rating: 60V  
 Current Rating: 0.5mm pitch=0.5A  
 1.0mm pitch=1A

### Mechanical & Environmental

Operating Temperature Range:  
 -40°C to +80°C (UL20624)  
 -40°C to +105°C (UL20706)  
 Durability: 30 Cycles

### Notes

For detailed tolerance info, refer to FFC product spec.

For non-standard options, contact GCT

- Exposed conductor length
- Support strip length
- Conductor thickness/width
- Folding/bending to an angle

### Ordering Grid

XX - XX - X - XXXX - X - X - XX - X - X Request Samples and Quotation

**Pitch**  
 05 = 0.5mm  
 10 = 1.0mm

**Number of Conductors**  
 04-80 (0.5mm pitch)  
 04-50 (1.0mm pitch)

**Cable Type**  
 A = Conductor Same Side  
 D = Conductor Opposite Side

**Overall Length (L)**  
 Specify cable length (Minimum = 30mm)  
 eg 0030 = 30mm  
 0100 = 100mm

**Conductor Thickness x Width**  
 A = 0.035 x 0.3 (0.5mm pitch only)  
 D = 0.035 x 0.65 (1.0mm pitch only)  
 E = 0.05 x 0.65 (1.0mm pitch only)  
 C = 0.1 x 0.65 (1.0mm pitch only) (Tin plating only)

**Exposed Conductor Length**  
 4 = 4mm both ends (standard)  
 Or specify custom length

**Support Strip Length**  
 06 = 6mm both ends (standard - 0.5mm pitch)  
 08 = 8mm both ends (standard - 1.0mm pitch)  
 Or specify custom length

**Request Samples and Quotation**

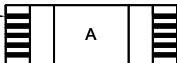
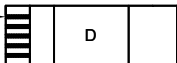
**Plating**  
 T = Tin  
 G = Gold (Conductor Thickness x Widths A, D & E only)

**UL Style No.**  
 1 = UL20624, not printed  
 2 = UL20624, printed  
 3 = UL20706, not printed  
 4 = UL20706, printed

Support Strip and Plating Options by Pitch			
Pitch (mm)	Support Strip Length (mm)	Plating Options (conductor thickness x width (mm))	
		Tin	Gold
0.5	6	0.035 x 0.3 (A)	0.035 x 0.3 (A)
1.0	8	0.035 x 0.65 (D) 0.05 x 0.65 (E) 0.1 x 0.65 (C)	0.035 x 0.65 (D) 0.05 x 0.65 (E)

Part Number N/A		Product Description Flat Flex Cable Ordering Information		 www.gct.co	
Drawing Date 23rd May 2011					
By KY	Detail FFC CABLE B PCN	Tolerances (Except as Noted) Length	Angle		
Revision B7	Date 12/06/25				
		Units: Metric (mm)	 3rd Angle Projection		This drawing is confidential and copyright of Global Connector Technology, Ltd (GCT). This drawing must not be copied or disclosed without written consent. E & OE
		Not to Scale	Drawn By SA	Sheet No. 1/2	

Shielded FFC Ordering Information

Shielding Options		
Material	Usage	Remarks
Aluminium foil with conductive glue ( <i>Standard</i> )	General shielding	Polyester film laminated non-conductive surface
Copper foil with conductive glue	High performance shielding	
Grounding Conductors		
Conductor 1		Decide the conductor numbers you require grounded to the shield.
Conductor 1		Note the default location of conductor 1 and whether this is suited to your design

For non-standard options, contact GCT

- Exposed conductor length
- Support tape length
- Conductor thickness/width
- Folding/bending to an angle

Ordering Grid

S

XX

XX

X

XXXX

X

X

XX

X

XX

X

X

Request Samples and Quotation

Pitch

05 = 0.5mm

10 = 1.0mm

Number of Conductors

06-80 (0.5mm pitch)

06-50 (1.0mm pitch)

Cable Type

A = Conductor Same Side

D = Conductor Opposite Side

Overall Length (L)

Specify cable length (Minimum = 30mm)

eg 0030 = 30mm

0100 = 100mm

Conductor Thickness x Width

A = 0.035 x 0.3 (0.5mm pitch only)

D = 0.035 x 0.65 (1.0mm pitch only)

E = 0.05 x 0.65 (1.0mm pitch only)

C = 0.1 x 0.65 (1.0mm pitch only) (Tin plating only)

Shield Material

A = Aluminium

C = Copper

Plating

T = Tin

G = Gold (Conductor Thickness x Widths A, D & E only)

UL Style No.

1 = UL20624, not printed

2 = UL20624, printed

3 = UL20706, not printed

4 = UL20706, printed

Support Strip Length

06 = 6mm both ends (standard - 0.5mm pitch)

07 = 7mm both ends (standard - 1.0mm pitch)

Or specify custom length

Exposed Conductor Length

5 = 5mm both ends (standard)

Or specify custom length

Which conductor is connected to shield both ends (up to 6)

eg 00 = No conductors are connected to shield

01 = Conductor 1 connected to shield both ends

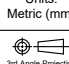


0105 = Conductors 1 and 5 connected to shield

010508 = Conductors 1, 5 and 8 connected to shield

...

010508101216 = Conductors 1, 5, 8, 10, 12 and 16 connected to shield

If more than 6 conductors connected to shield, contact GCT

Part Number		Product Description	
N/A		Flat Flex Cable Ordering Information	
Drawing Date			
23rd May 2011			
By	KY	Tolerances (Except as Noted)	Units:
Detail	FFC CABLE	Length	Metric (mm)
Revision	B7	Angle	
Date	12/06/25		
			
			
			
		This drawing is confidential and copyright of Global Connector Technology, Ltd (GCT). This drawing must not be copied or disclosed without written consent. E & OE	
Not to Scale	Drawn By SA	Sheet No. 2/2	

