



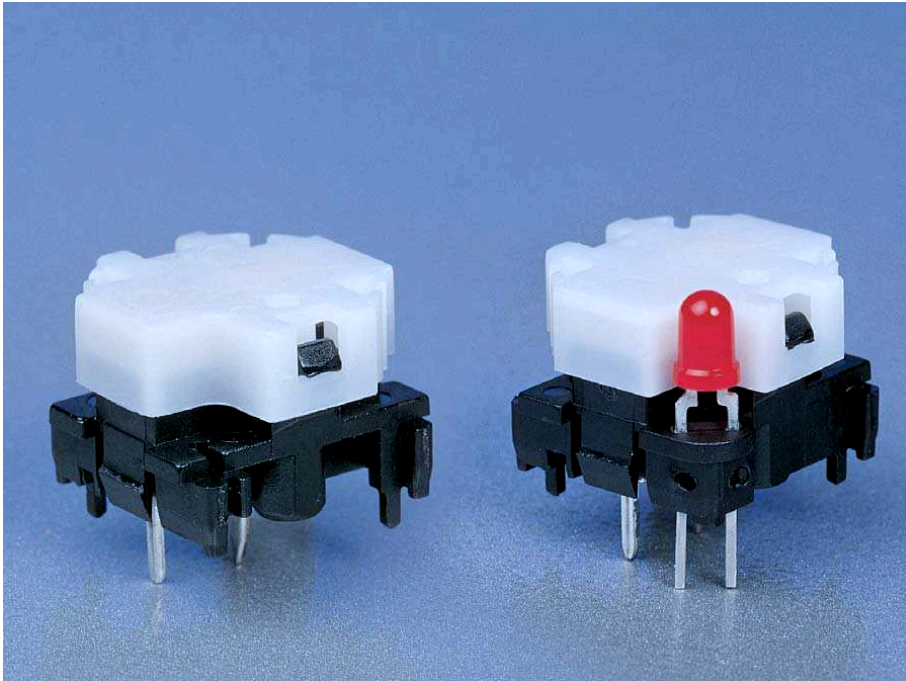
HESTORE.HU

elektronikai alkatrész áruház

EN: This Datasheet is presented by the manufacturer.

Please visit our website for pricing and availability at www.hestore.hu.

SERIES 6425 - KEYMODULES



PRODUCT ADVANTAGES

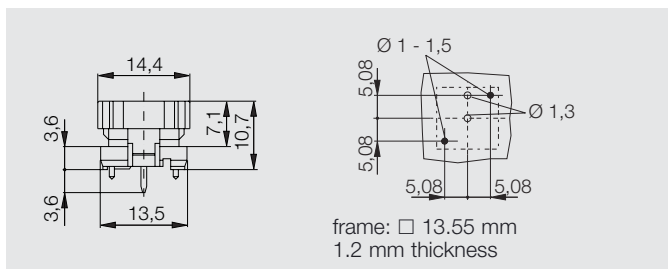
- ◆ Single pole NO with and without LED
- ◆ High life endurance
- ◆ Gold contacts guarantee secure switching function
- ◆ Short bounce time
- ◆ Comfortable actuation characteristic and low operating noise
- ◆ Low profile
- ◆ The keymodules are suitable for automatic soldering

TECHNICAL DATA

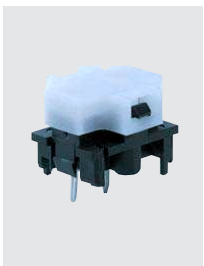
- ◆ Voltage 28 V max.
- ◆ Current 100 mA max.
- ◆ Life endurance > 10⁶ cycles at 10 mA 12 V
- ◆ Contact resistance < 250 mΩ
- ◆ Insulation resistance (new state) > 100 MΩ
- ◆ Bounce time typical < 5 ms
- ◆ Ambient temperature -20 ... +70 °C
- ◆ Storage temperature -55 ... +75 °C
- ◆ Actuating force approx. 0,7 N
- ◆ Total travel max. 1.6 mm
- ◆ Housing made of thermoplastic material
- ◆ Contact material gold
- ◆ Terminals tinned



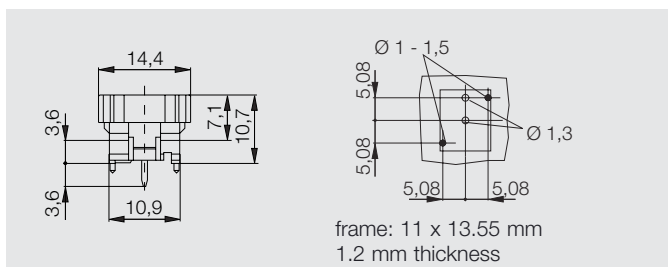
6425.0101*



for all single keycaps with spacing 16 mm or 19 mm



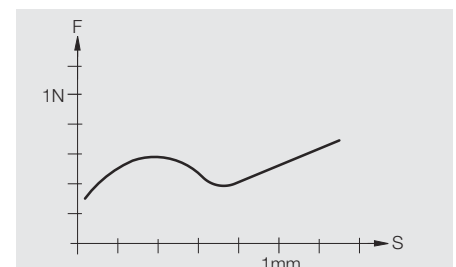
6425.1101*



for guide mechanism, keymodules with narrow socket

SPECIAL NOTES

- ◆ For use of keymodules with integrated LED a current limitation to max. 20 mA is necessary.



Actuating force / travel diagram

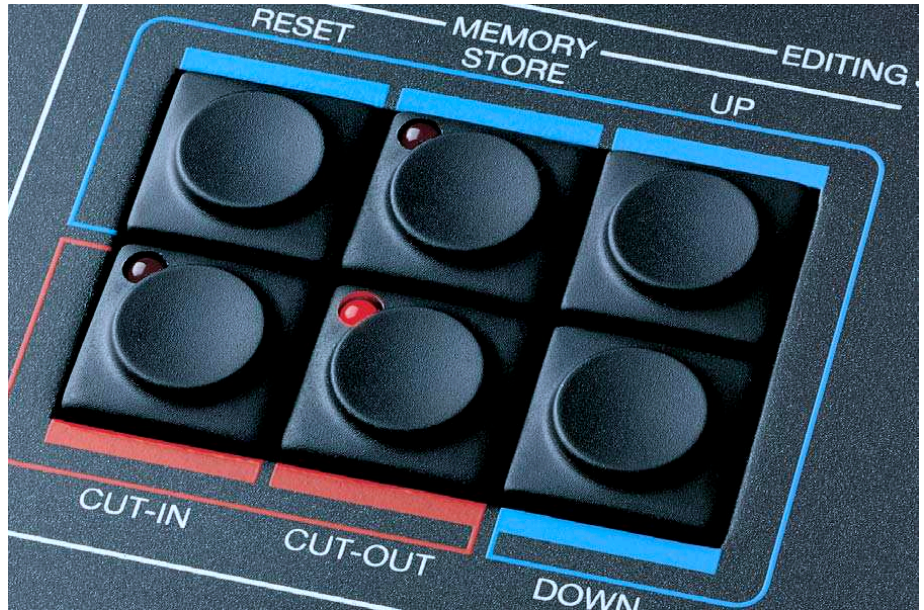
KEYCAPS WITH AND WITHOUT LED WINDOW

FOR KEYMODULES OF SERIES 6425

SQUARE KEYCAPS

with ergonomic surface area. For spacing 16 mm and 19 mm.

different colours and characters on request

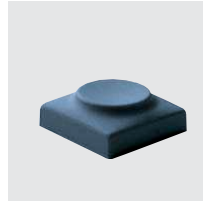


WITHOUT LED WINDOW

spacing 16 mm
spacing 19 mm



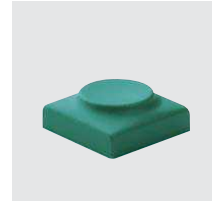
826 000 011*
825 000 011*



826 000 021*
825 000 021*



826 000 071*
825 000 071*



826 000 091*
825 000 091*

WITH LED WINDOW

spacing 16 mm
spacing 19 mm



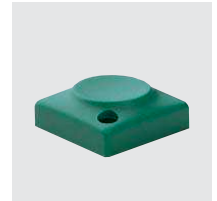
829 000 011*
828 000 011*



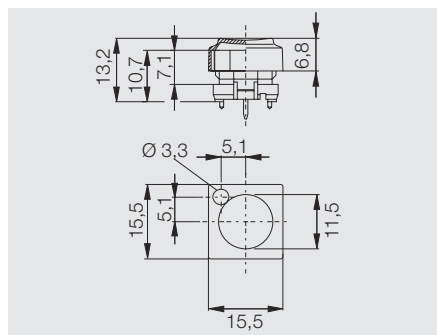
829 000 021*
828 000 021*



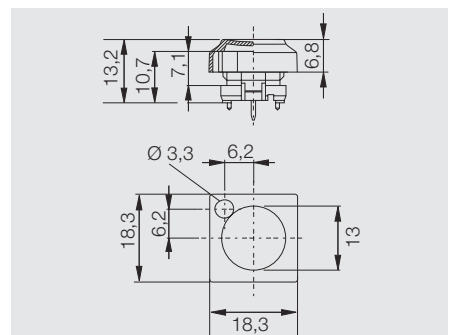
829 000 071*
828 000 071*



829 000 091*
828 000 091*



spacing 16 mm



spacing 19 mm

SQUARE KEYCAPS

with white characters.

Please complete the reference numbers by the three figures below the respective character.

basic reference numbers for spacing 16 mm:
anthracite: 826 . . . 011
dark grey: 826 . . . 021

basic reference numbers for spacing 19 mm:
anthracite: 825 . . . 011
dark grey: 825 . . . 021

Other keycap colours and characters on request.



KEYCAPS WITH AND WITHOUT LED WINDOWS

FOR KEYMODULES OF SERIES 6425

ROUND KEYCAPS

with ergonomic surface area,
Ø 17 mm.

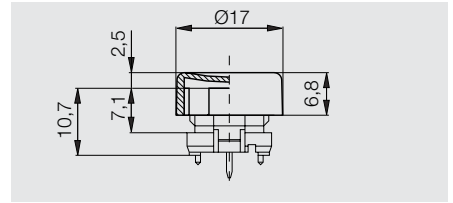
keycaps with characters and
other colours on request.



840 000 011*



840 000 021



KEYCAPS

with oval surface area,
spacing 16 mm.

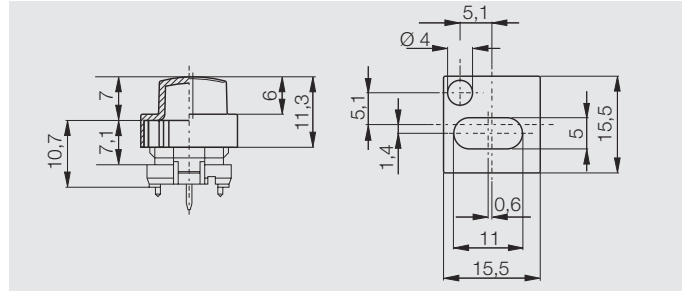


anthracite
dark grey
grey

827 020 011

827 020 021

827 020 031



KEYCAPS

with round surface area,
spacing > 15 mm.

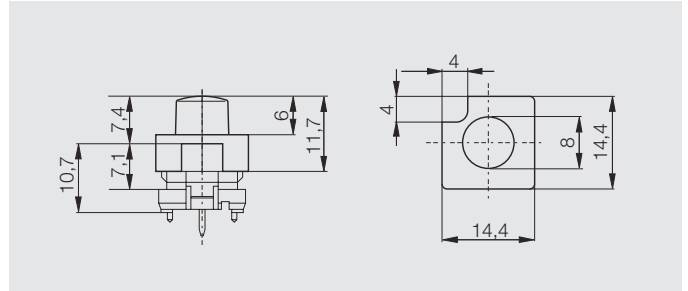


anthracite
dark grey
grey

827 100 011

827 100 021

827 100 031



GUIDE MECHANISM FOR MULTIPLE KEYCAPS

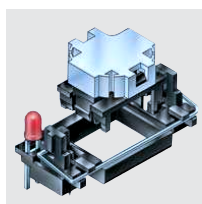
OF KEYMODULES SERIES 6425

GUIDE MECHANISM

The Marquardt guide mechanism for multiple keycaps guarantees optimum functioning even when actuated off-centre.

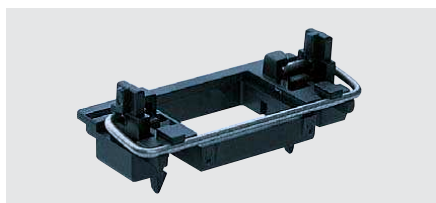
The guide mechanism can optionally be assembled with one or two LEDs.

6425.1101

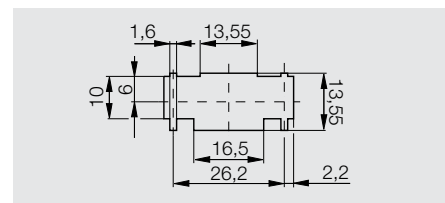


GUIDE MECHANISM FOR

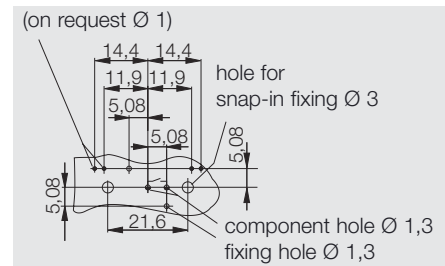
two-fold keycaps, spacing 16 mm.



190 059 013



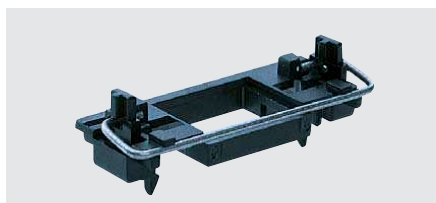
recommended cut-out



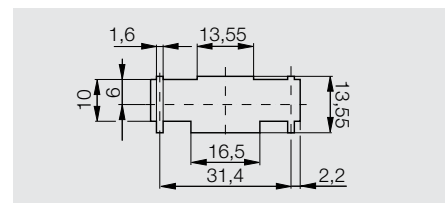
PC-board layout, component side

GUIDE MECHANISM FOR

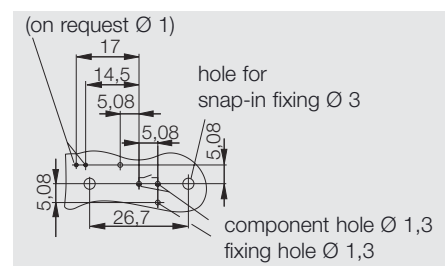
three-fold keycaps, spacing 16 mm
two-fold keycaps, spacing 19 mm
three-fold keycaps, spacing 19 mm



190 059 023



recommended cut-out



PC-board layout, component side

* Version on stock

MULTIPLE KEYCAPS WITH AND WITHOUT LED WINDOW FOR KEYMODULES OF SERIES 6425

TWO-FOLD KEYCAPS

spacing 16 mm, optionally with or without LED window

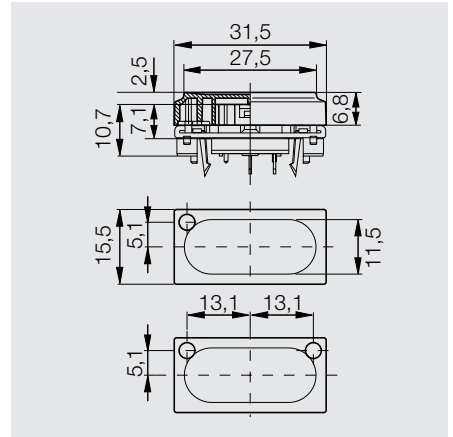
keycaps with characters on request



without LED window: 842 000 011 anthracite
842 000 021 dark grey
842 000 031 grey

with 1 LED window: 842 500 011 anthracite

with 2 LED windows: 842 800 011 anthracite



TWO-FOLD KEYCAPS

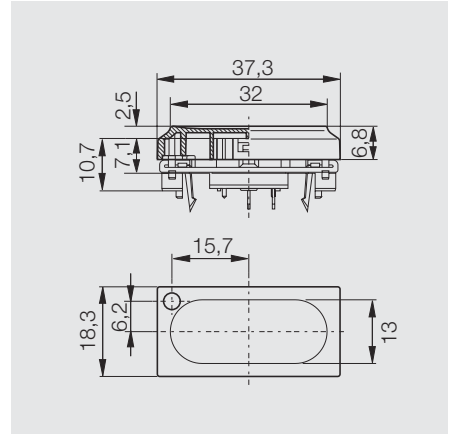
spacing 19 mm, optionally with or without LED window.

keycaps with characters on request.



without LED window: 844 000 011 anthracite
844 000 021 dark grey
844 000 031 grey

with 1 LED window: 844 500 011 anthracite



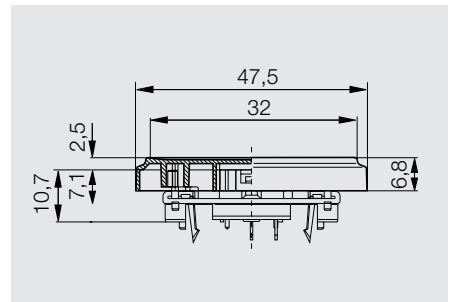
THREE-FOLD KEYCAPS

spacing 16 mm.

keycaps with characters on request



843 000 011 anthracite



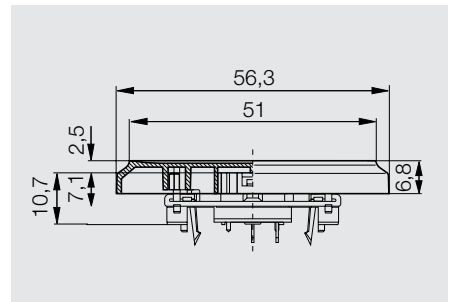
THREE-FOLD KEYCAPS

spacing 19 mm.

keycaps with characters on request



845 000 011 anthracite



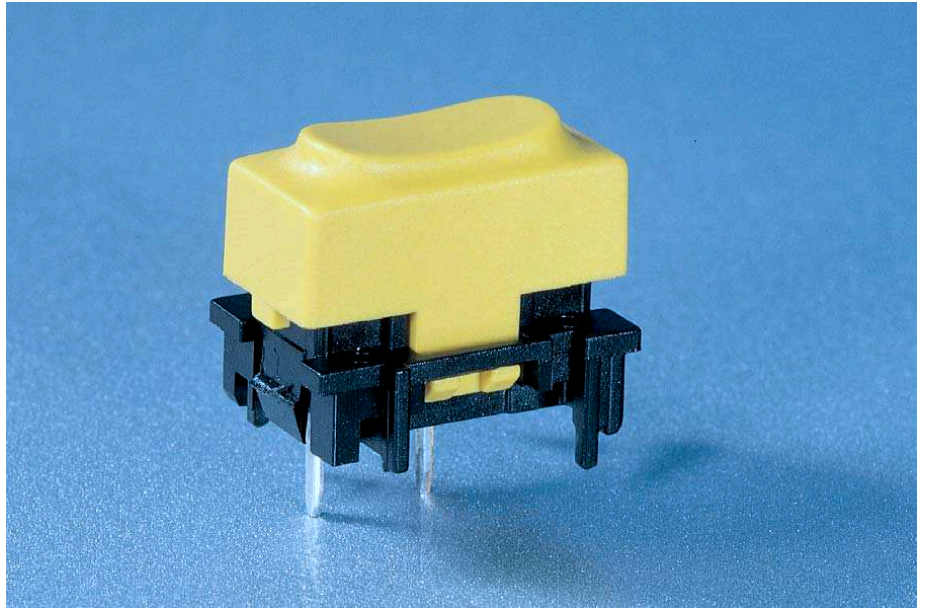
SERIES 6450 - KEYMODULES WITHOUT LED

PRODUCT ADVANTAGES

- ◆ Single pole normally open
- ◆ High life endurance
- ◆ Gold contacts guarantee secure switching function
- ◆ Short bounce time
- ◆ Comfortable actuation characteristic and low operating noise
- ◆ Low profile
- ◆ The keymodules are suitable for automatic soldering

TECHNICAL DATA

- ◆ Voltage max. 28 V
- ◆ Current max. 100 mA
- ◆ Life endurance >10⁶ cycles at 10 mA 12 V
- ◆ Contact resistance < 250 mΩ
- ◆ Insulation resistance (new state) > 100 MΩ
- ◆ Bounce time typical < 5 ms
- ◆ Ambient temperature -20 ... +70 °C
- ◆ Storage temperature -55 ... +75 °C
- ◆ Actuating force approx. 0,7 N
- ◆ Total travel max. 1.6 mm
- ◆ Housing made of thermoplastic material
- ◆ Contact material gold
- ◆ Terminals tinned



6450.0005*



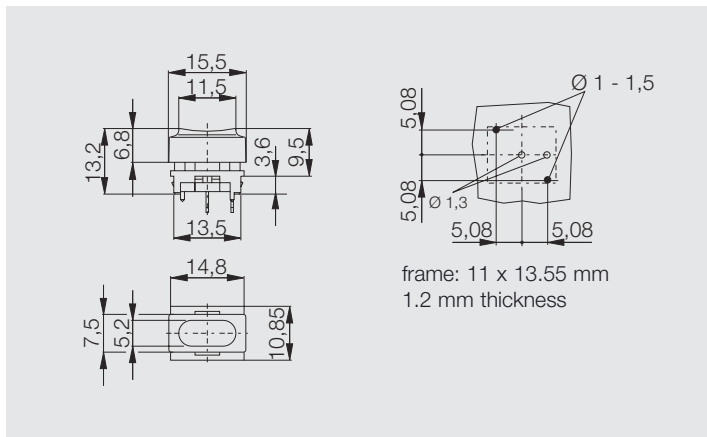
6450.0003*



6450.0008



6450.0009



ON REQUEST

- ◆ Different colours
- ◆ Other signs and symbols

